



# GAT MONTHLY MEMBERSHIP PROGRESS REPORT

Results as of: 6/30/2024

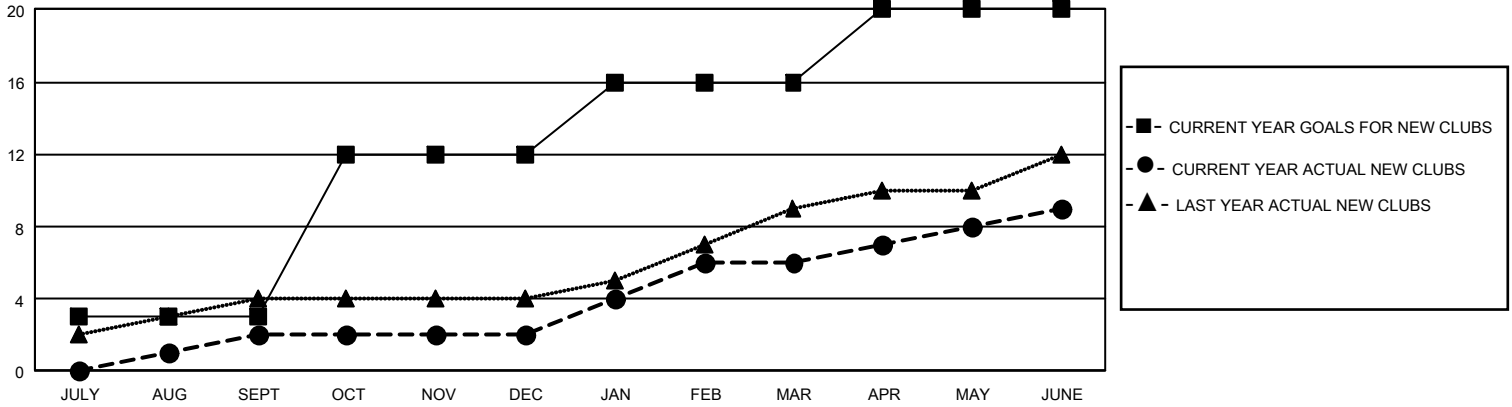
## GMT Constitutional Area 2, Group B

REPORT DOES NOT INCLUDE CLUBS IN UNDISTRICTED AREAS.

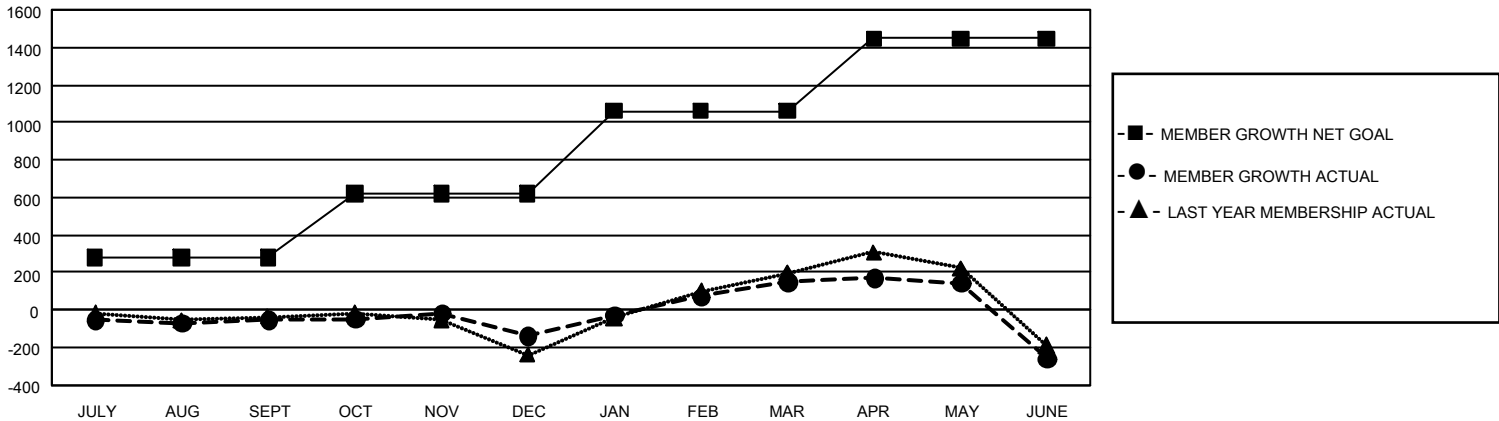
Clubs			
RESULTS FOR 2023-2024			
QUARTER	NEW CLUB GOAL	NEW CLUBS	DROPPED CLUBS
JULY/AUG/SEPT	9	2	1
OCT/NOV/DEC	27	0	3
JAN/FEB/MAR	12	4	1
APR/MAY/JUNE	12	3	7

Members			
RESULTS FOR 2023-2024			
QUARTER	MEMBER GROWTH NET GOAL	MEMBER GROWTH ACTUAL	DROPPED MEMBERS ACTUAL (including transfers)
JULY/AUG/SEPT	281	394	398
OCT/NOV/DEC	339	621	652
JAN/FEB/MAR	441	701	356
APR/MAY/JUNE	385	597	944

GOALS AND ACTUAL NEW CLUBS CUMULATIVE



GOALS AND ACTUAL MEMBERS CUMULATIVE



DROPPED CLUBS: 12	490 CLUBS OF 689 ADDED 1 OR MORE NEW MEMBERS	<u>GENDER DISTRIBUTION</u>	
<u>DROPPED MEMBERS</u>		MALE	9,685 (61.58%)
DECEASED	272	FEMALE	6,038 (38.39%)
CLUB CANCELLED	46	NON BINARY	0 (0.00%)
OTHER	2,020	PREFER NOT TO ANSWER	4 (0.03%)
TOTAL	2,338	TOTAL FAMILY UNIT MEMBERS	3,005
	<a href="#">CLICK HERE FOR CUMULATIVE MEMBERSHIP DATA</a>	FAMILY MEMBERS PAYING HALF DUES	1,556